



USB 3.0 PCI Express 2-Ports Host Controller Card



User Manual

HUSB302PCX

www.hamletcom.com

Index

1. INTRODUCTION	4
2. INSTALLATION	5
2.1. HARDWARE INSTALLATION.....	5
2.2. DRIVER INSTALLATION (WINDOWS XP/VISTA/7)	6
3. INSTALLATION VERIFICATION	10
4. SPECIFICATIONS	12

About this manual

Information in this document has been carefully checked for accuracy; however, no guarantee is given to the correctness of the contents. The information in this document is subject to change without notice. The manufacturer does not make any representations or warranties (implied or otherwise) regarding the accuracy and completeness of this document and shall in no event be liable for any loss of profit or any commercial damage, including but not limited to special, incidental, consequential, or other damage.

Trademarks

All trademarks and company names mentioned in this manual are used for description purpose only and remain property of their respective owners.

Safety Instructions

Always read the safety instructions carefully.

- Keep this User's Manual for future reference
- Keep this equipment away from humidity

If any of the following situations arises, get the equipment checked by a service technician.

- The equipment has been exposed to moisture.
- The equipment has been dropped and damaged.
- The equipment has obvious sign of breakage.
- The equipment has not been working well or you cannot get it to work according to the User's Manual.

Dear Customer,

thanks for choosing an Hamlet product. Please carefully follow the instructions for its use and maintenance and, once this item has run its life span, we kindly ask You to dispose of it in an environmentally friendly way, by putting it in the separate bins for electrical/electronic waste, or to bring it back to your retailer who will collect it for free.



WEEE Information

For EU (European Union) member users:

According to the WEEE (Waste electrical and electronic equipment) Directive, do not dispose of this product as household waste or commercial waste. Waste electrical and electronic equipment should be appropriately collected and recycled as required by practices established for your country. For information on recycling of this product, please contact your local authorities, your household waste disposal service or the shop where you purchased the product.

We inform You this product is manufactured with materials and components in compliance with RoHS Directive 2002/95/CE, 2002/96/CE, 2003/108/CE; with WEEE Directive 2003/96/CE, Italian Legislative Decree 2005/151 and EMC Directive 2004/108/EC for the following standards:

EN 55022: 2006 + A1: 2007

EN 55024: 1998 + A1: 2001 + A2: 2003

EN 61000-3-2: 2006

EN 61000-3-3: 1995 + A1: 2001 + A2: 2005

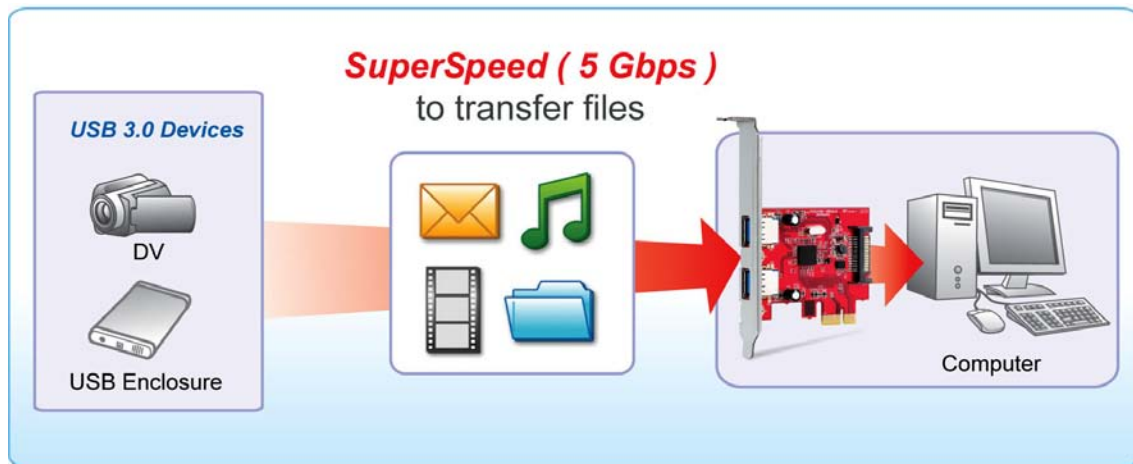


The **complete CE declaration of conformity** of the product can be obtained by contacting Hamlet at info@hamletcom.com specifying the product code and the documentation.

The information on the importer for your country are available in the “About Us” section of the Hamlet website at www.hamletcom.com.

1. Introduction

The USB 3.0 PCI Express card is compliant to USB 3.0 Standards and backward compatible with USB 2.0 devices. It also allows you to connect multiple peripherals to your PC at the same time. The USB 3.0 PCI Express card enhances the performance of transmission that excessively faster than existing USB 2.0 device. It is the ideal interface for transferring extremely large amounts of data from USB 2.0/3.0 compliant products such as real-time video cameras, portable devices and others.



Features

- Adds 2 USB 3.0 ports
- Easy install into any PCI Express slot
- Supports USB 3.0 transfer rate
- Supports SATA Power
- Plug and play

Package Contents

- USB 3.0 PCI Express card
- SATA-Molex power cable adapter
- CD (Driver and User's Manual)
- Quick Installation Guide

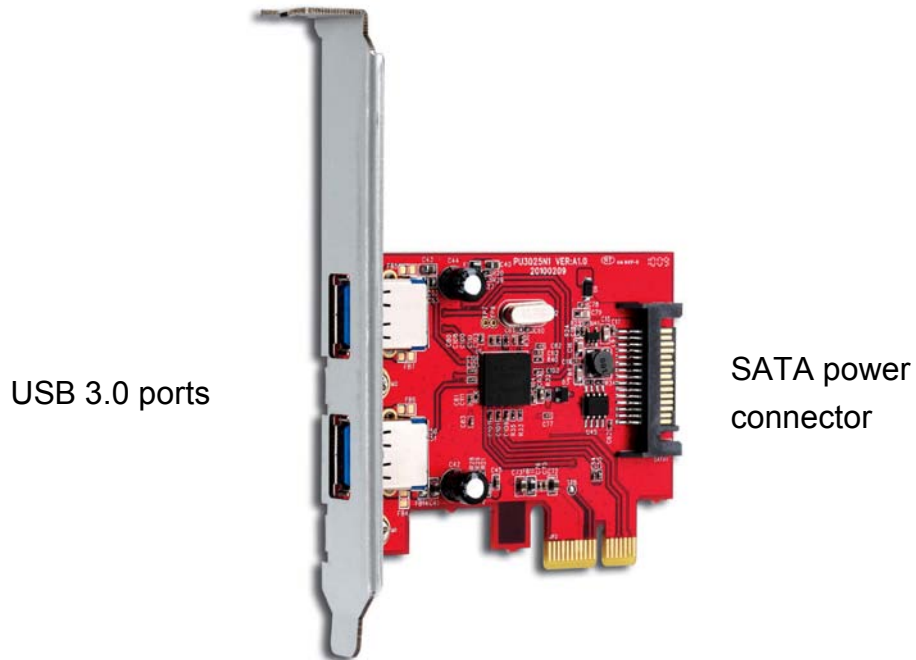
System Requirements

- Windows® -based (XP, Vista™, 7) computer
- An available PCI express slot
- CD/DVD drive

Note: Mac systems do not support this USB 3.0 PCI Express host card

2. Installation

2.1. Hardware Installation



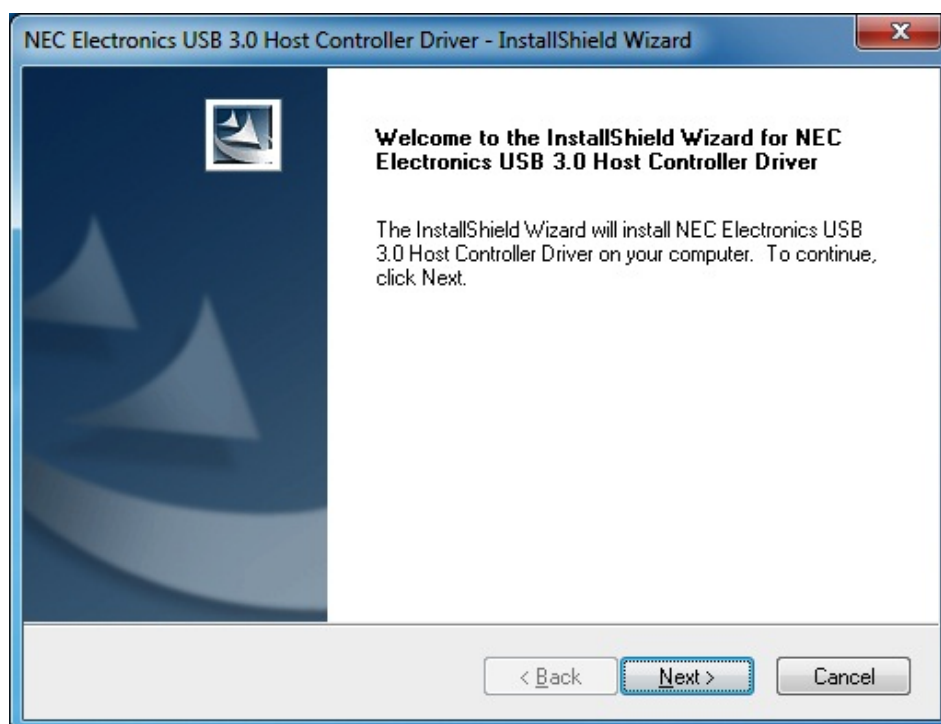
1. Turn your computer off and any peripherals connected to the computer.
2. Unplug the power cable before installing the host card.
3. Remove the cover from the computer case (Refer to the computer's manual if necessary).
4. Locate an available PCI Express slot and remove the bracket cover.
5. Insert the card into the PCI Express slot and fasten the bracket to the rear of the case.
6. Be sure to connect the SATA power connector from computer's power supply to the card as it does require additional power to function properly (if necessary use the SATA-Molex adapter provided).
7. Place the cover back onto the computer.
8. Insert the power cable into the socket on the power supply.

2.2. Driver Installation (Windows XP/Vista/7)

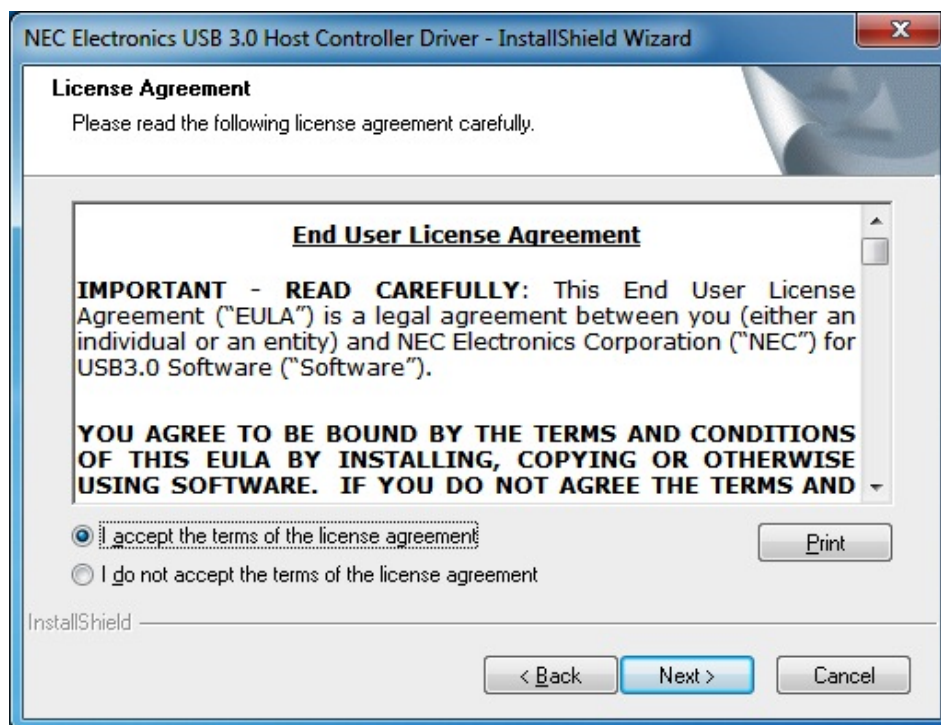
1. Insert the provided CD into CD-Rom locates and double-click the *Setup.exe* file.



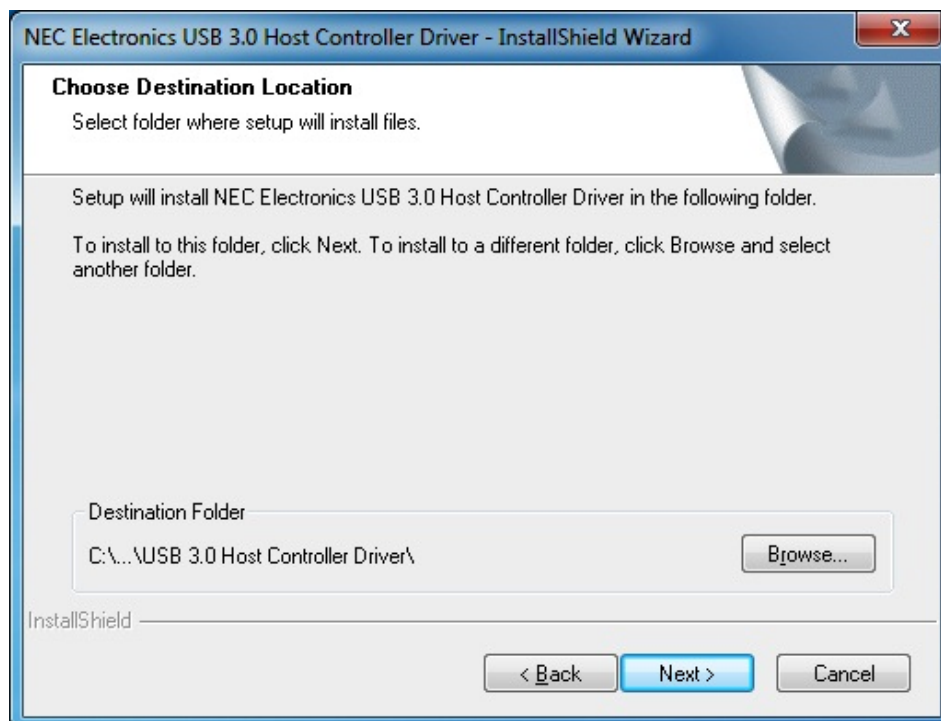
2. When the following screen shows up, please click *Next* to install the Driver.



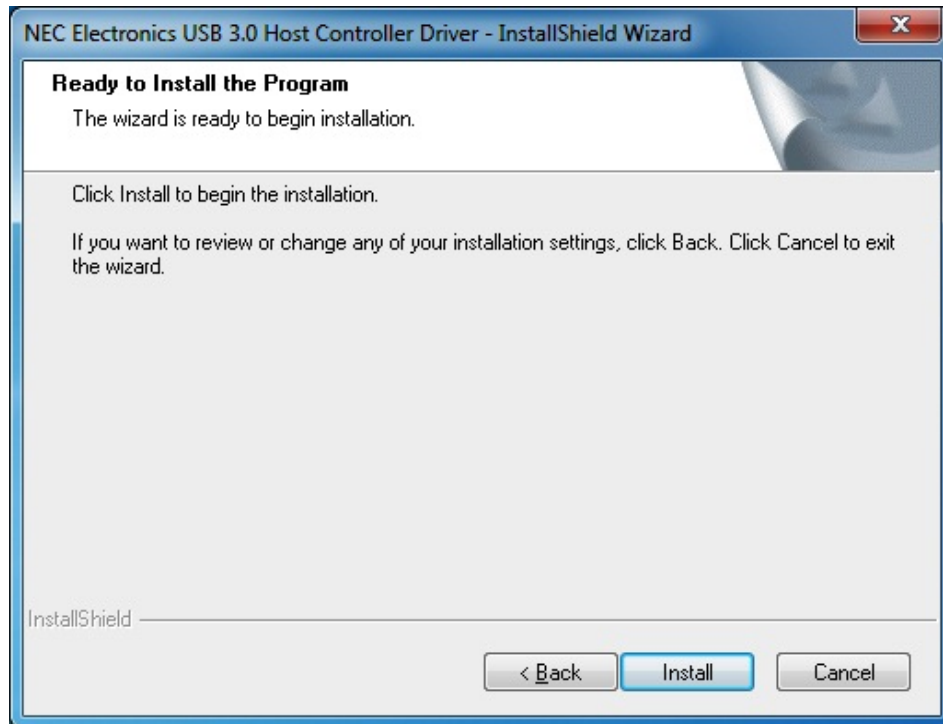
3. After reading the *End-User License Agreement*, please choose "I accept the terms of the License Agreement" and click *Next*.



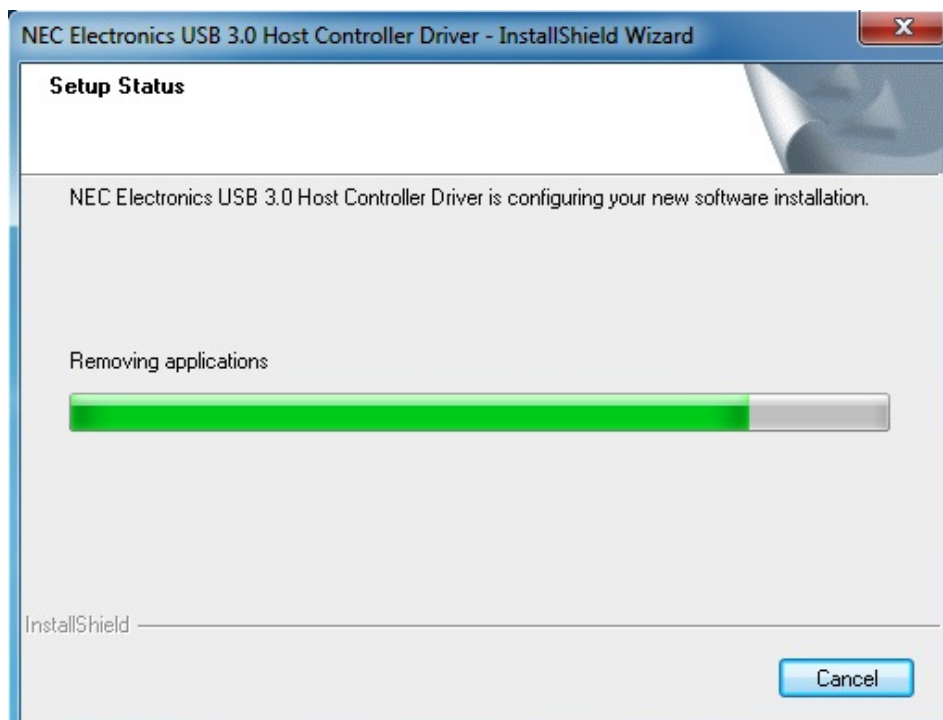
4. Please click *Browse* to choose the destination folder. Then click *Next*.



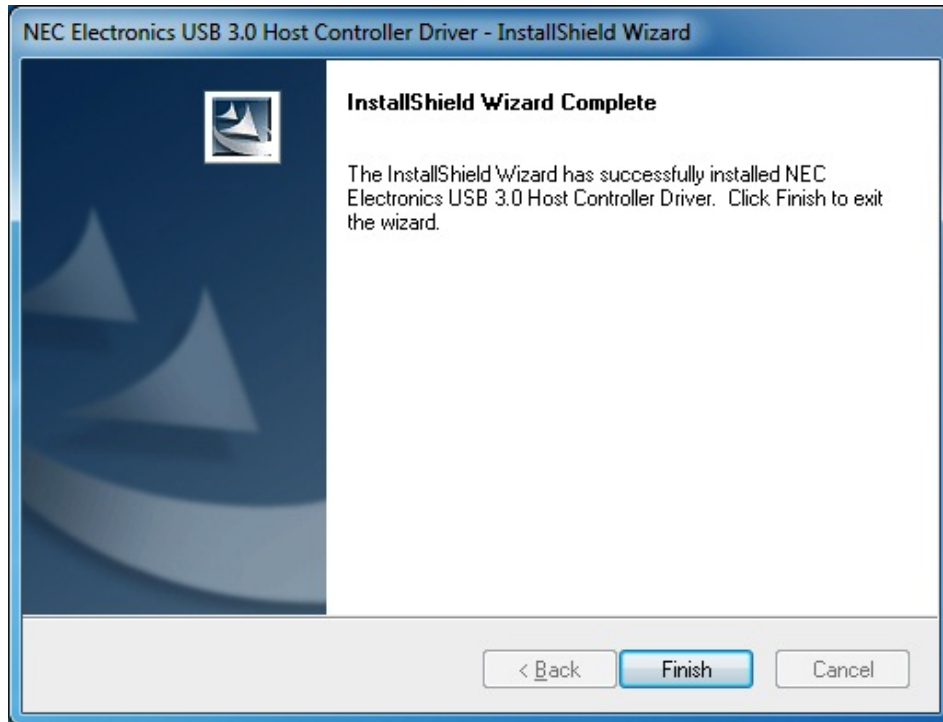
5. Click *Install* to install the NEC Electronics USB 3.0 Host Controller Driver.



6. It will take a while to install the driver.



7. Please click *Finish* to complete the NEC Electronics USB 3.0 Host Controller Driver.

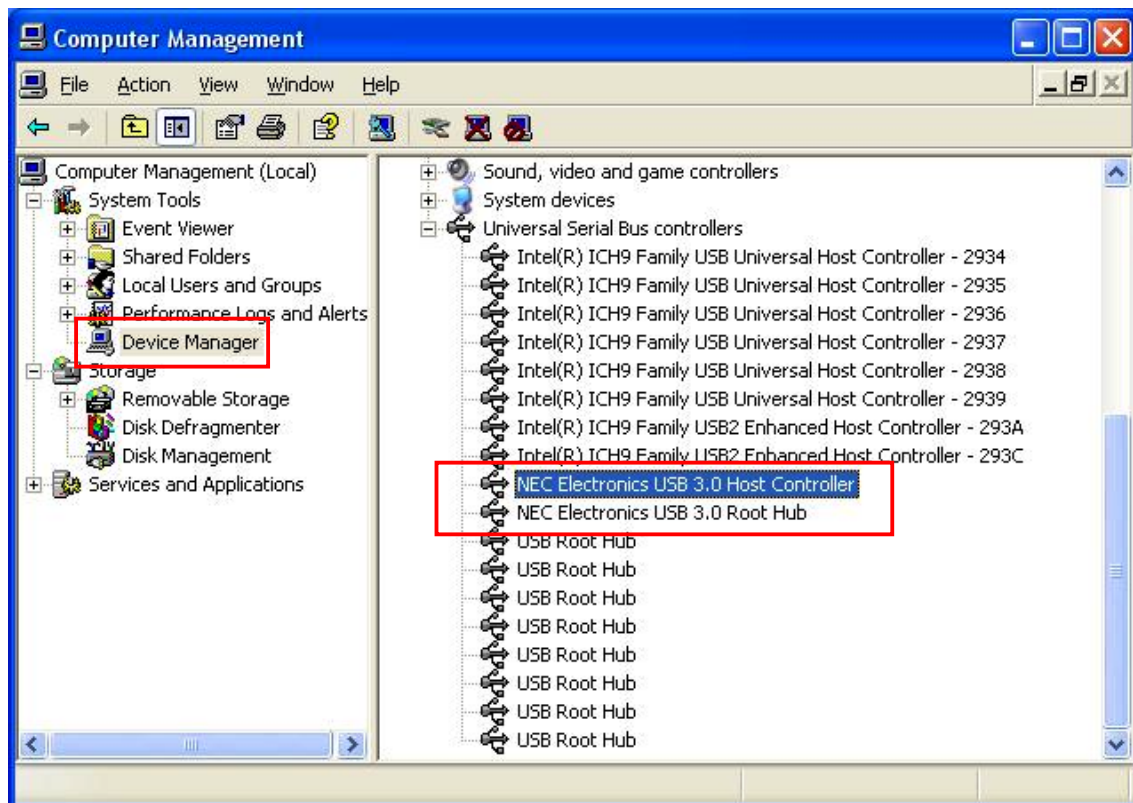


Actual pictures depend on your operation system. These screen shots are from Windows 7 and might vary slightly for each operation system.

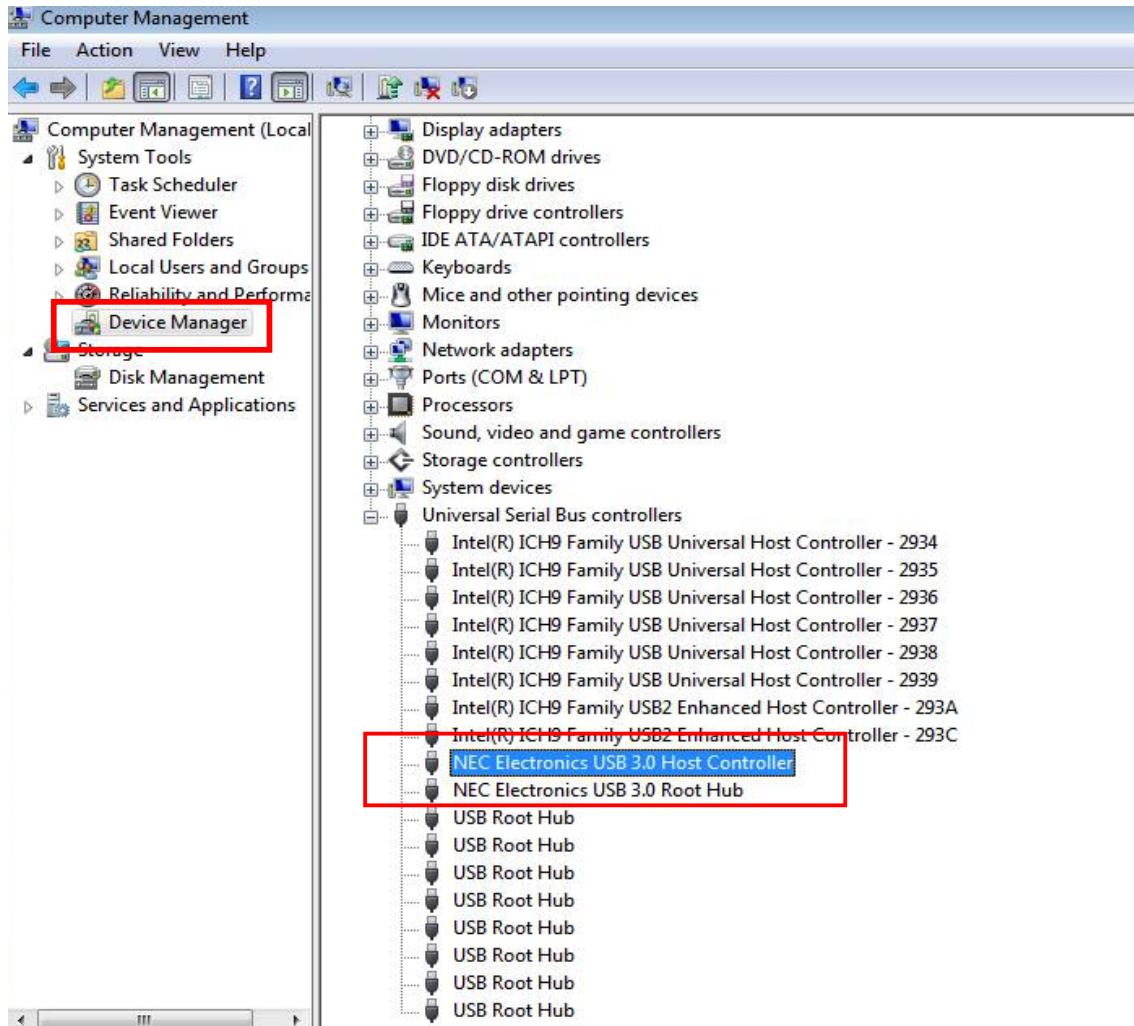
3. Installation Verification

After finishing driver installation and plugging this PCI Express Card to PC, the system will detect the device. You can go to *Device Manager* to verify the entire installation.

Windows XP



Windows Vista / 7



4. Specifications

- Compliant with Universal Serial Bus 3.0 Specification Revision 1.0
- Supports the following speed data rate as follows:
 - Low-speed (1.5 Mbps)
 - Full-speed (12 Mbps)
 - High-speed (480 Mbps)
 - Super-speed (5 Gbps)
- Supports 2 downstream ports for all levels of speed
- Supports all USB compliant data transfer type; Control/ Bulk/Interrupt/Isochronous transfer
- Compliant with PCI Express[®] Base Specification 2.0
- Supports PCI Express[®] Card Electromechanical Specification Revision 2.0
- Supports PCI Bus Power Management Interface Specification Revision 1.2
- Supports power each port up to 900 mA

Specifications and appearance are subject to change without notice.