

Hamlet

SMART FILM CONVERTER Film Scanner for Slides, Negatives and Positives



USER MANUAL XDVDIAP0

www.hamletcom.com

Dear Customer,
thanks for choosing a Hamlet product. Please carefully follow the instructions for its use and maintenance and, once this item has run its life span, we kindly ask You to dispose of it in an environmentally friendly way, by putting it in the separate bins for electrical/electronic waste, or to bring it back to your retailer who will collect it for free.



We inform You this product is manufactured with materials and components in compliance with RoHS Directives 2011/65/EU & 2015/863/EU, WEEE Directive 2002/96/CE, 2003/108/CE Italian Legislative Decree 2005/151 and EMC 2014/30/EU, LVD 2014/35/EU Directives for the following standards:

EN 55022: 2010

EN 61000-3-2: 2006 + A1: 2009 + A2: 2009

EN 61000-3-3: 2013

EN 55024: 2010

EN 60950-1: 2006 + A11: 2009 + A1: 2010 + A12: 2011 + A2: 2013



The complete CE declaration of conformity of the product can be obtained by contacting Hamlet at info@hamletcom.com. Visit www.hamletcom.com for complete information on all Hamlet products and to access downloads and technical support.

Imported by: CARECA ITALIA SPA - Scandiano (RE) . Italy.

Trademarks and changes

All trademarks and company names mentioned in this manual are used for description purpose only and remain property of their respective owners.

The material in this document is for information only. Contents, specifications and appearance of the product are indicative and may change without notice.

Introduction

Smart Film Converter allows you to convert your 35mm film negatives and slides to JPG pictures and save them directly onto an SD card without the need of a computer.

Smart Film Converter is a high-resolution 5 Megapixels scanner with a 2.4" LCD display that allows you to preview and adjust your images before capturing.

You can also connect Smart Film Converter to your PC with the included USB cable and use it as an SD card reader to transfer your pictures from the card onto your hard drive. Smart Film Converter can be also connected to a TV to enjoy your pictures on a HD screen.

Features

- 5 Megapixels resolution
- Stand-alone operation without computer
- 2.4" TFT LCD display, for easy photo preview
- High scan resolution: 2592 x 1680 pixels
- Works with 35mm color and monochrome film and slides
- Hi-speed image preview
- Built-in SD card slot*
- Single pass scan method
- Compatible with Windows and Mac

System requirements

- USB 2.0 port
- Microsoft Windows XP/Vista/7/8/10
- Mac OS X 10.4.8 or above

* SD card not included.

Package contents

- Film scanner
- USB cable
- Video cable
- Negative film holder
- Positive slide holder
- Rapid slide feeder
- 5V DC adapter
- User's guide
- Brush

NOTE: You can use the provided brush to clean the backlight panel.

Safety precautions

- **Important:** keep away from water and moisture.
- **Caution:** do not disassemble this unit. To prevent this risk of electric shock, do not remove cover.
- **Ventilation:** place the device in location with proper ventilation. Do not leave the device for a long time in poorly ventilated environments such as beds, sofas and rugs.
- **Heat:** keep away from sources of high heat such as radiators or stoves.
- **USB overloading:** do not overload the USB connections on your computer. If you have too many devices connected to your computer there may not be enough power for the film scanner to operate properly.
- **Non-use period:** unplug the USB cord of the device from the computer when the unit is left unused for a long period of time.
- **Maintenance:** do not attempt to repair the device. Maintenance can be carried out by qualified personnel only.
- **Cleaning:** we recommend using a clean, dry, non-alcohol cotton swab to clean the device.

Product overview



Buttons and connections

1. Scanner/Playback mode selection
2. Mirror Image/Rotation
3. Menu (On/Off)
4. Image capture
5. Brighter image (Scanner mode)
Next image (Playback mode)
6. Darker image (Scanner mode)
Previous image (Playback mode)
7. Mini USB port
8. TV output
9. SD card slot

IMPORTANT

The device requires a SD card installed for proper operation.

Description of accessories

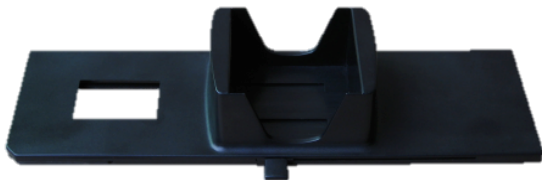
Negative film holder



Positive slide holder



Rapid slide feeder



Brush

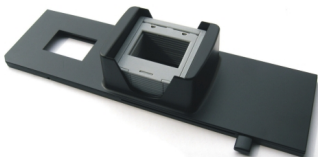


Using the included holders

Rapid slide feeder

The rapid slide feeder allows you to quickly scan a large number of images.

1. With the lever positioned to the right, stack your slides in the rapid slide feeder.



2. Insert the rapid slide feeder into the film holder slot on the right side of Smart Film Converter.



3. Push the lever towards the left to load a slide, then pull the lever back to the right again. Repeat this step for subsequent slides (which will push the used slides out the other side).



Slide holder

The slide holder allows to load up to four slides.

1. Hold up the slide toward the light and look through the slide to ensure it appears normally (not a mirror image). Now turn the slide so the image is upside down.



2. Open the slide holder at the marked spot on the top. With the slide holder laid open, place the slide into recessed area in the holder (the slide should fit perfectly).



Note: Handle slides with care. Any dust, scratches or finger prints will show up on your saved images. If possible, use cotton gloves when handling slides. It is recommended to use compressed air to remove any dust on the slides.

3. Close the slide holder and press the edges so that it locks in place firmly.



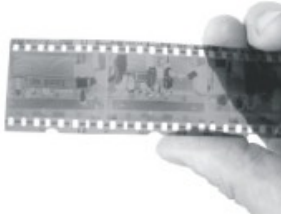
4. Insert the slide holder into the slot on the right side of the film scanner as shown in the picture.



Negative film holder

The negative film holder allows you to load a color or monochrome filmstrip up to six frames.

1. Hold up the negative toward the light. As you look through the negative, you should be able to read the small negative numbers normally (not a mirror image). Now turn the negative so the image is upside down while looking at the same side.



2. Open the negative holder at the marked spot on the top. With the negative holder laid open, place the negative into holder so the notches line up with the notches on the holder.



Note: Handle negatives with care. Any dust, scratches or finger prints will show up on your saved images. If possible, use cotton gloves when handling negatives. It is recommended to use compressed air to remove any dust on the negatives.

3. Close the negative holder and press the edges so that it locks in place.



4. Insert the negative holder into the slot on the right side of the film scanner as shown.



Scanner operation

Description of scanner functions

Below are described and illustrated the various features of Smart Film Scanner.



5M

Resolution



SD card inserted

00000

Number of available scans



Playback mode



Mirror Image/Rotation



Exposure compensation (-2 – +2 EV)




Power On/Off and Menu

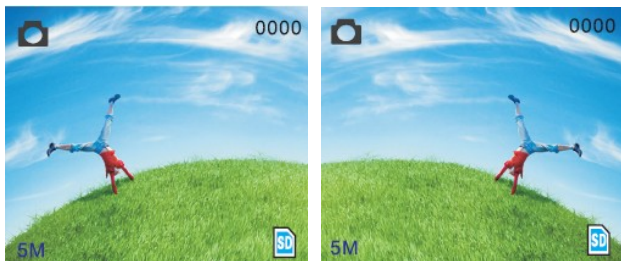


Capture mode

Mirror image/Rotation

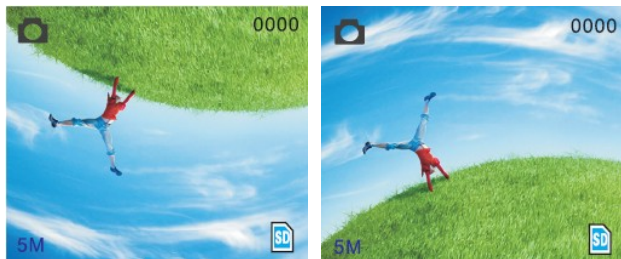
If you need to mirror or rotate the image before scanning, you can adjust the image orientation by pressing the “Mirror Image/Rotation” button .

Press the button once to flip the image horizontally.



Pressing the button a second time, the image is reflected vertically, rotating 180 degrees respect to the original.

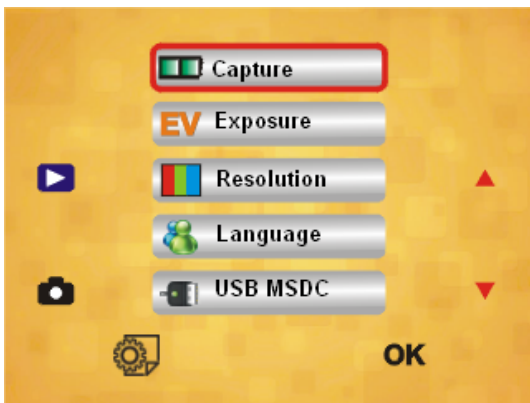
Pressing the button once again, the image is reflected horizontally again then turned upside down.



A further press of the button brings the image back to its original position.

Main Menu

Press the MENU button on the device to open settings.



The main menu allows you to access the following submenus to configure different options.

Capture: B&W, Positive and Negative film options

Exposure: Exposure compensation (-2~2 EV)

Resolution: 5M/10M

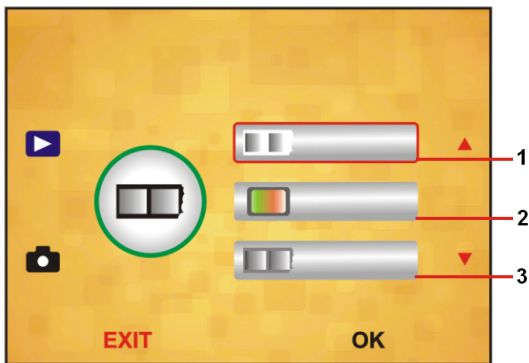
Language: English , French, Deutsch, Italian, Spanish , Chinese, Dutch, Japanese.

USB MSDC: MSDC mode (mass storage)

Capture

Enter this menu to select the film type.

Highlight the menu using the navigation buttons beside the screen and then press the button immediately under OK to enter the menu.



1. B&W film

Select this option to capture monochrome image from B&W film.

2. Positive film

Select this option to capture color image from positive filmstrip or mounted slides.

3. Negative film

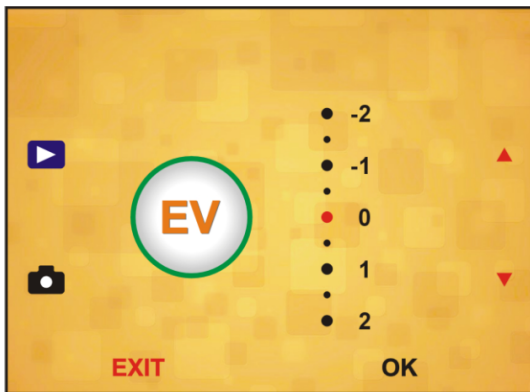
Select this option to capture color image from color negative film.

Exposure

Enter this menu manually adjust exposure compensation.

Negative EV values (up arrow) make the image darker while positive EV values (down arrow) make the image brighter. You can adjust exposure compensation at intervals of 0.5 EV between -2 and +2 EV.

Select the desired value using the arrow keys and then press OK to confirm.



Resolution

The “Resolution” menu allows you to choose the desired image resolution.

The available options are 5M (5 Megapixel) and 10M (10 Megapixel).

Select the desired value using the arrow keys and then press OK to confirm.



Note: 10M resolution is interpolated.

Language

Enter this menu to select the language for the device interface. The available languages are: English, French, Deutsch, Italian, Spanish, Chinese, Dutch, Japanese.

Select the desired language with the arrow keys and press OK to confirm.



USB MSDC

This option allows you to use the film scanner as a memory card reader. To use this function, proceed as follows:

1. Connect the film scanner to PC using the USB cable provided.
2. Turn on the scanner.
3. Press MENU button, select "USB MSDC" option on the main menu then press "OK" to confirm.

When using Smart Film Converter connected to the computer, the film scanner display is turned off.

TV connection

Smart Film Converter comes with a video output that lets you connect your device to a TV and view the photos stored on an SD card directly on the TV screen.

Before connecting Smart Film Converter to your TV, make sure that it has a composite video input.

Video input is usually recognizable by a yellow connector as shown in the following image.



Once you find the video connector on your TV, you can use the video cable provided with the product to connect Smart Film Converter to your TV and enjoy your photos on a large screen.