

Hamlet

USB 3.0 Docking Station

Dual Display DVI+HDMI - 6 PORT USB HUB - LAN - AUDIO



User Manual

HDOCKS300

www.hamletcom.com

Index

1. INTRODUCTION	5
2. PRODUCT OVERVIEW	6
2.1 PORTS AND CONNECTORS	6
3. DRIVER INSTALLATION	7
3.1 WINDOWS	7
3.2 MAC OS	8
4. DOCKING STATION CONNECTION	10
5. VERIFYING THE INSTALLATION	11
5.1 WINDOWS	11
5.2 MAC OS	12
6. DISPLAY CONFIGURATION ON WINDOWS	13
6.1 MULTI-MONITOR CONFIGURATION.....	14
7. DISPLAY CONFIGURATION ON MAC OS	17
8. AUDIO CONFIGURATION	19
8.1 WINDOWS	19
8.2 MAC OS	20
9. UNINSTALL THE DRIVER	21
9.1 WINDOWS	21
9.2 MAC OS	22
10. SPECIFICATIONS	23
10.1 SUPPORTED RESOLUTIONS	24

Dear Customer,

thanks for choosing a Hamlet product. Please carefully follow the instructions for its use and maintenance and, once this item has run its life span, we kindly ask You to dispose of it in an environmentally friendly way, by putting it in the separate bins for electrical/electronic waste, or to bring it back to your retailer who will collect it for free.



WEEE Information (For European Union member users)

According to the WEEE (Waste Electrical and Electronic Equipment) Directive, do not dispose of this product as household waste or commercial waste. Waste electrical and electronic equipment should be appropriately collected and recycled as required by practices established for your country. For information on recycling of this product, please contact your local authorities, your household waste disposal service or the shop where you purchased the product.

We inform You this product is manufactured with materials and components in compliance with RoHS Directives 2011/65/EU & 2015/863/EU, WEEE Directives 2002/96/CE, 2003/108/CE Italian Legislative Decree 2005/151, EMC Directive 2014/30/EU and LVD Directive 2014/35/EU for the following standards:

EN 55032: 2015

CISPR 32: 2012

EN 61000-3-2: 2019

EN 61000-3-3: 2013

EN 55035: 2017

CISPR 35: 2016

IEC 62368-1: 2014 (Second Edition)



The complete CE declaration of conformity of the product can be obtained by contacting Hamlet at info@hamletcom.com.

Visit www.hamletcom.com for complete information on all Hamlet products and to access downloads and technical support.

Imported by: CARECA ITALIA SPA - Scandiano (RE) . Italy.

About this manual

This manual is provided for information purpose only. Contents, specifications and appearance of the product are indicative and may change without notice.

Trademarks

All trademarks and company names mentioned in this manual are used for description purpose only and remain property of their respective owners.

Safety Instructions

Always read the safety instructions carefully.

- Keep this User's Manual for future reference
- Keep this equipment away from humidity

If any of the following situations arises, get the equipment checked by a service technician.

- The equipment has been exposed to moisture.
- The equipment has been dropped and damaged.
- The equipment has obvious sign of breakage.
- The equipment has not been working well or you cannot get it to work according to the User's Manual.

1. Introduction

Hamlet USB 3.0 Dual Display Docking Station lets you expand the working area of the screen and the notebook's connectivity by connecting a single cable. HDMI and DVI video outputs with HD support allow you to connect two external displays to extend the computer's desktop.

The two additional USB 3.0 ports on the front provide high-performance connectivity to external hard drives and support fast charging for smartphones and tablets. The four USB 2.0 ports on the back of the device allow you to easily connect peripherals such as mice, keyboards, printers etc. To complete the connectivity of the docking station the Gigabit Ethernet port for connecting to a wired network and to the Internet and the audio connectors for external speakers, or headphones, and microphone. The package includes a DVI to VGA display adapter to connect even previous generation VGA monitors.

Features

- Compatible with USB 3.0/2.0 specification
- Supports USB 3.0 data transfer rate up to 5 Gbps
- Dual display video output up to 2048x1152 pixel resolution
- Support DVI and HDMI output
- Support audio 2.1 channel
- Support Gigabit Ethernet
- Support Battery Charging specification revision 1.2

Package Contents

- USB 3.0 Docking Station
- USB 3.0 cable
- Stand for upright use
- DVI-VGA video adapter
- External power adapter
- Utility CD (Driver and User's Manual)
- Quick Installation Guide

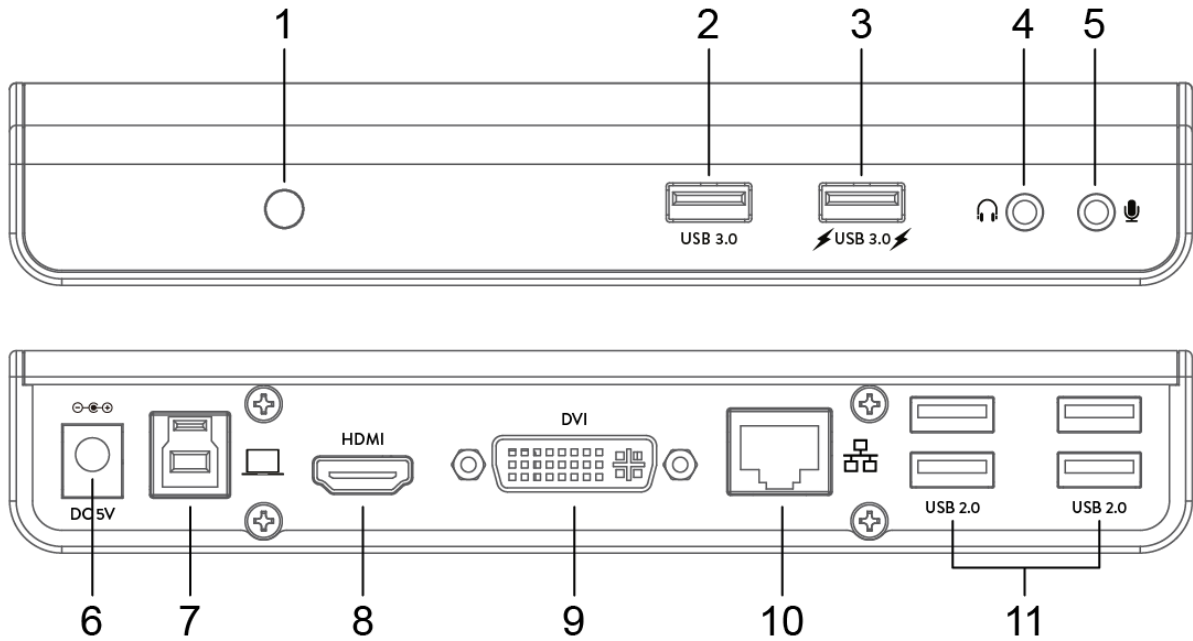
System Requirements

- Processor: 2.0 GHz dual core or higher
- RAM: 4GB or greater
- One available USB 2.0 or USB 3.0 (recommended) port
- 30 MB of available disk space
- Operating Systems:
Windows 7 (SP1 or later), Windows 8, Windows 10
Mac OS 10.6 or later

2. Product Overview

2.1 Ports and Connectors

The following illustration shows the location and description of the ports and connectors on the front and rear panel of the Docking Station.



1. Power LED indicator
2. USB 3.0 port
3. USB 3.0 port with Battery Charging 1.2 support
4. Audio output jack for headphone or speaker
5. Microphone input jack
6. Power jack for power adapter connection
7. USB 3.0 Type B upstream port for connection to computer
8. HDMI connector
9. DVI connector
10. Gigabit Ethernet port (RJ-45)
11. USB 2.0 ports (x4)

3. Driver Installation

Follow the instructions below to install the driver and connect the Docking Station to your system.

IMPORTANT: Do NOT connect the docking station to a computer before installing the driver. Before installation, please download the latest drivers available at the following addresses.
www.hamletcom.com/products/hdocks300.aspx?t=download
www.displaylink.com/downloads

Please note that the information and screenshots shown on this user's manual may vary slightly depending on the operating system.

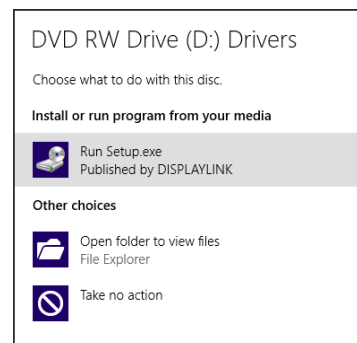
3.1 Windows

1. Insert the provided CD into your CD-ROM drive. The **AutoPlay** dialog box will appear.
2. Click **Run Setup.exe** to execute the installer program.

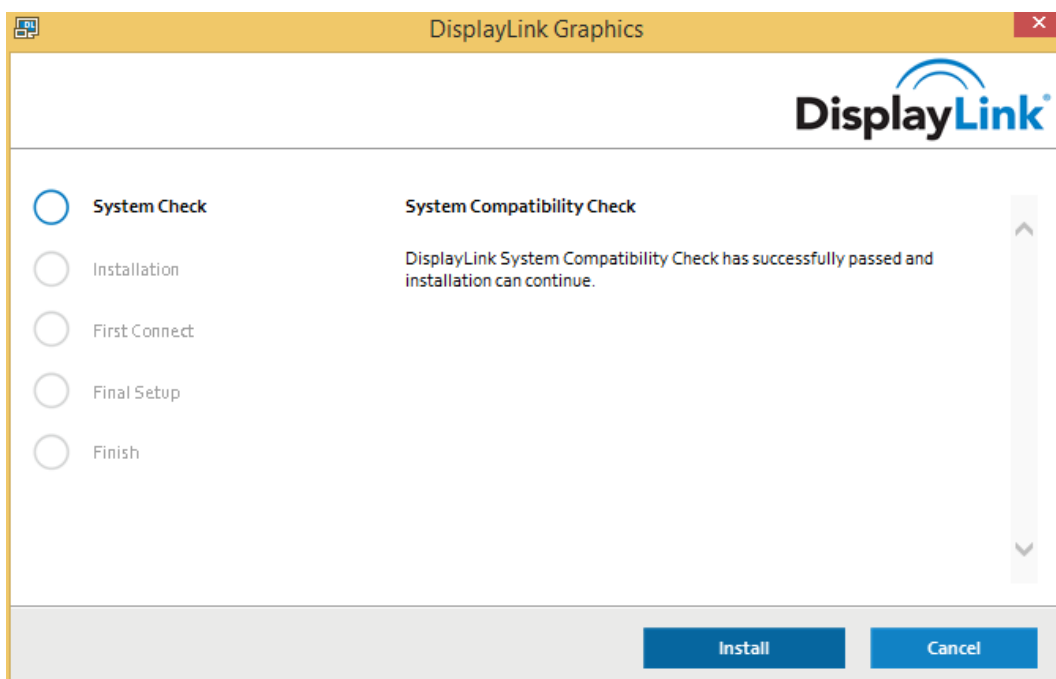
NOTE:

If the **AutoPlay** does not start automatically, locate and double-click on the **Setup.exe** file in the driver CD folder to launch the setup.

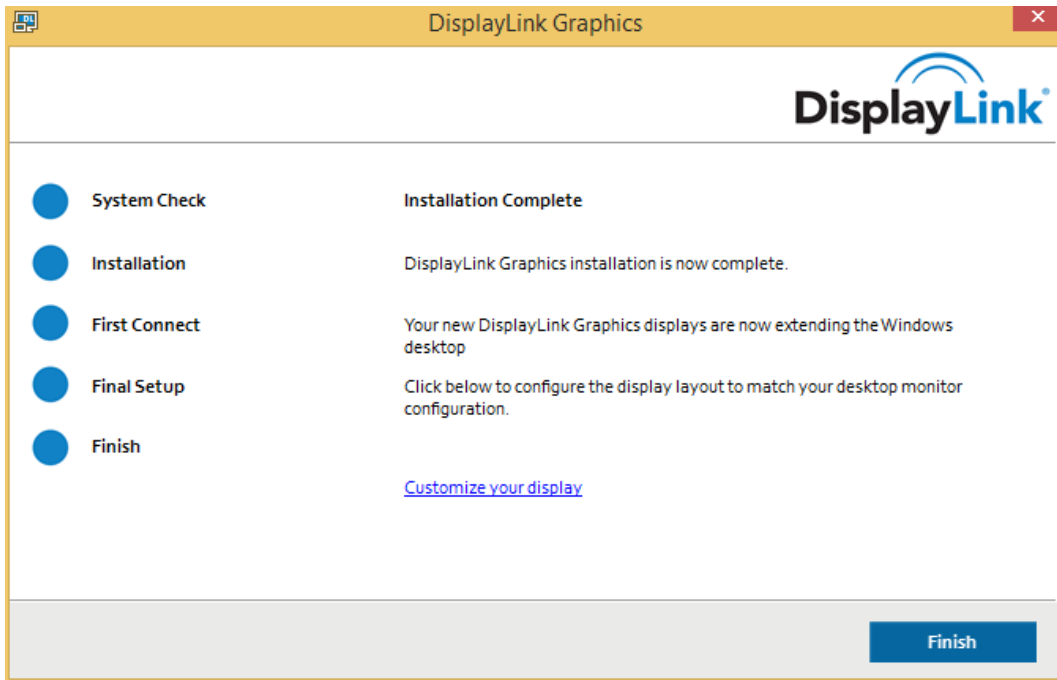
If **User Account Control** dialog box pops up, enter the administrator password and then click **Yes** to continue.



3. Click **Install** to start the installation.



4. Follow the onscreen instructions and click **Finish** to complete installation.



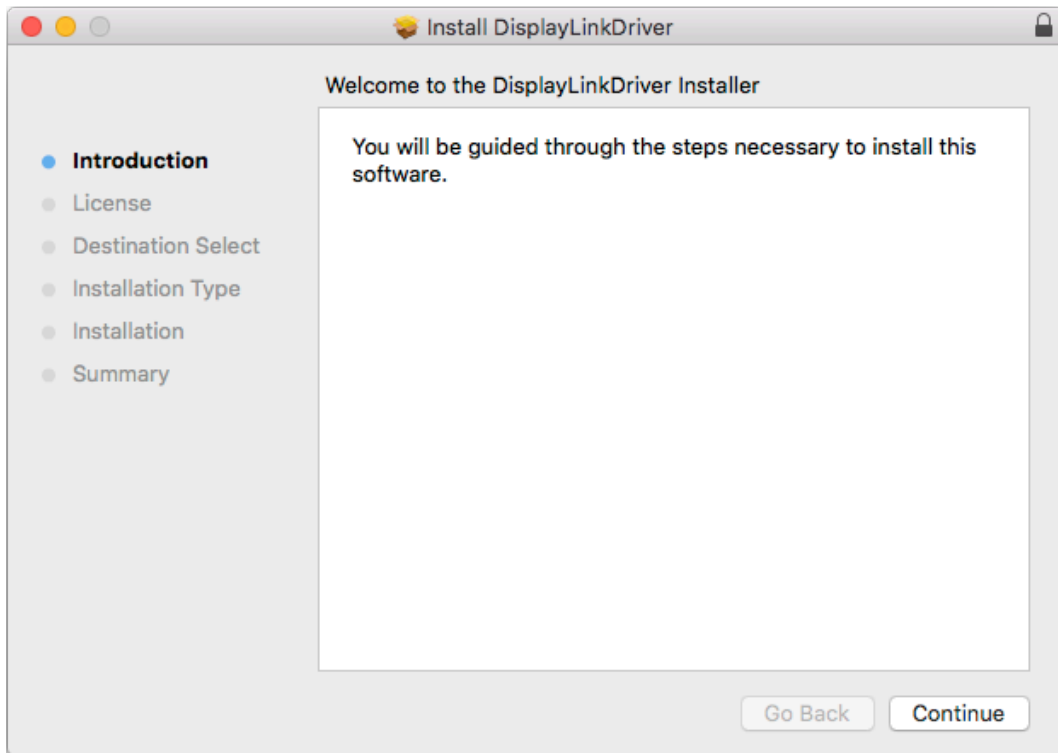
5. If required, click **Reboot** to restart the computer.
6. Once the installation is completed, you can connect the Docking Station to the computer. For connection details, refer to the **Connection** chapter.
7. When the operating system detects the Docking Station, a notification message will appear in the system tray.

3.2 Mac OS

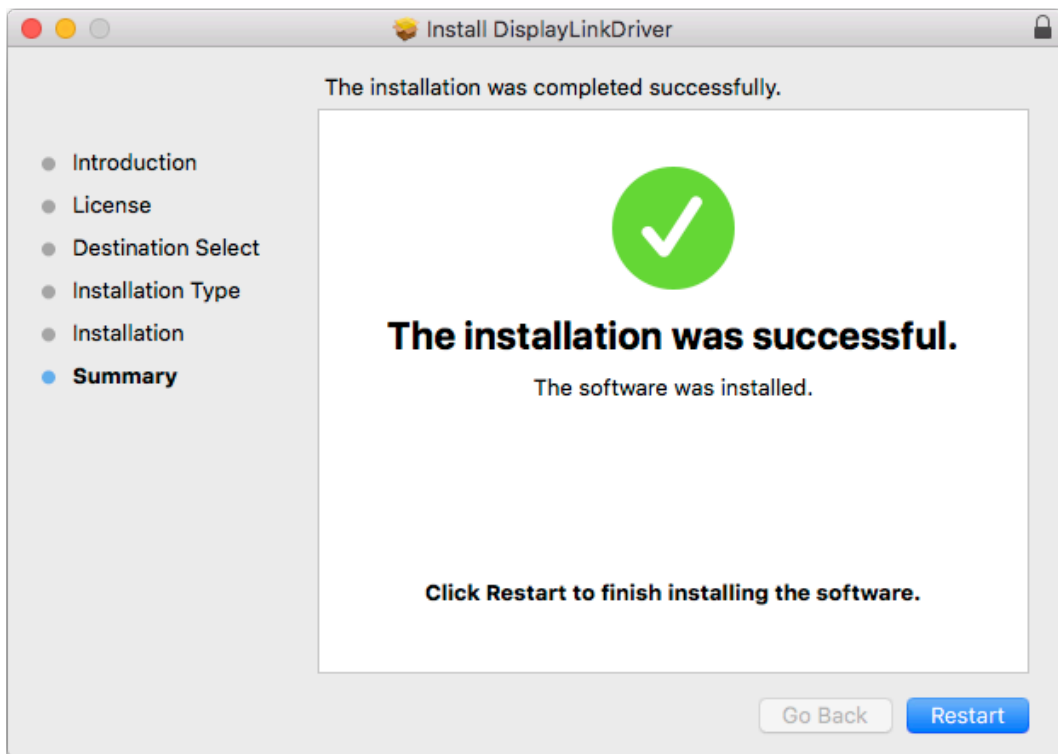
1. Insert the provided CD into your CD-ROM drive.
2. Open the **Mac** folder and double-click the **dmg** file to open it.
3. Double-click the **Installer.pkg** file to start the driver installation.



4. Click **Continue** and follow the onscreen instructions to install the driver.



5. When the installation process is complete, click **Restart** to finish installing the software.

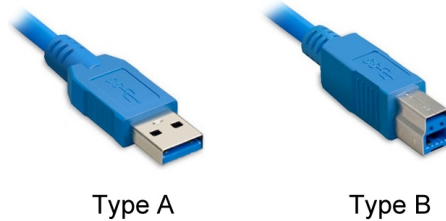


6. After restarting the computer, you can connect the Docking Station.
For connection details, refer to the **Connection** chapter.

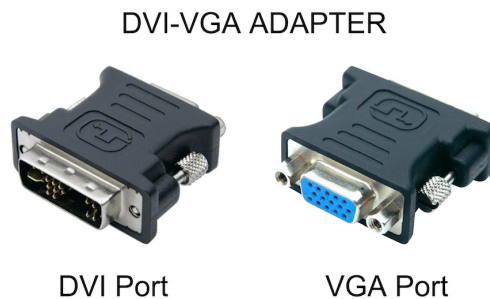
4. Docking Station Connection

Follow the instructions below to connect the Docking Station to the computer and external devices.

1. Connect the Docking Station to the computer using the USB 3.0 cable included.
Plug the USB 3.0 Type B connector into the USB 3.0 upstream port on the back of the Docking Station and the USB 3.0 Type A connector to an available USB port of the computer.



2. Plug the power adapter into the power jack of the Docking Station.
3. Connecting HDMI/DVI monitor.
Use a HDMI cable (not included) to connect an HDMI monitor to the HDMI port.
Use a DVI cable (not included) to connect a DVI monitor to the DVI port.
NOTE: You can also use the included DVI-VGA adapter to connect a VGA monitor to the DVI port of the Docking Station.



4. Plug an Ethernet cable to the RJ-45 port on the Docking Station to connect to your network hub, switch or router.
5. Connect your USB devices to the USB 3.0 ports on the front side or to the USB 2.0 ports on the back side of the Docking Station.
6. Connect speaker/headphone and microphone.
Insert the speaker/headphone jack into the headphone socket on the front of the Docking Station.
Insert the microphone jack into the microphone socket on the front of the Docking Station.

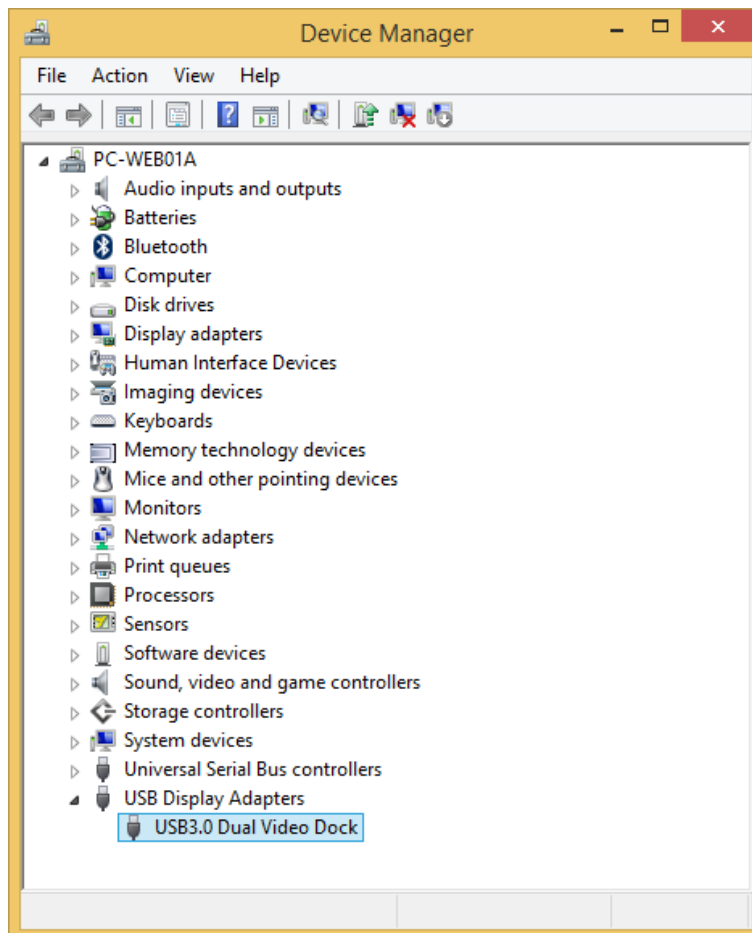
5. Verifying the Installation

To verify the driver installation, follow the instructions below.

5.1 Windows

In Windows operating system, you can check the driver in the **Device Manager**.

The **USB 3.0 Dual Video Dock** is listed under the **USB Display Adapters** item. The screenshot picture below is from Windows 8.



NOTE:

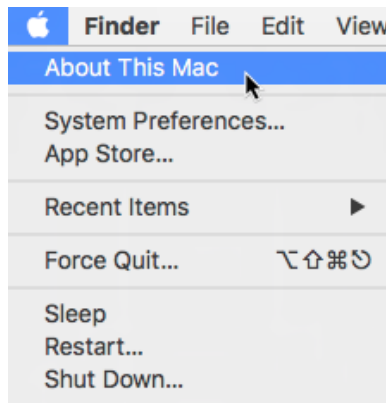
If you cannot find the driver in the list, the driver may not be properly installed.

In this case, we recommend to uninstall the driver, unplug the Docking Station and repeat the installation procedure.

5.2 Mac OS

To verify the correct driver installation in Mac operating system, follow the steps below.

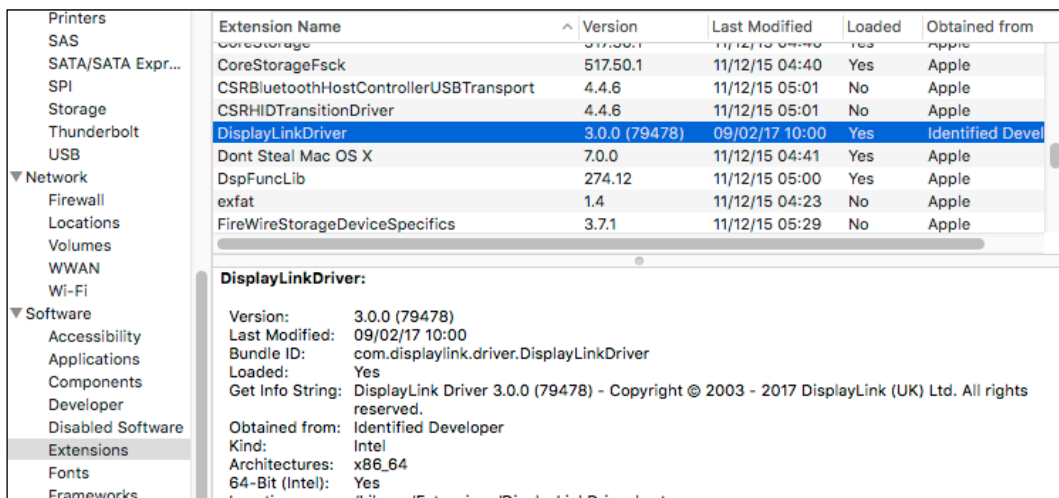
1. Click on the Apple menu in the upper-left corner of your screen and choose **About This Mac**.



2. In the screen that appears, click **More info...** or **System Report...** depending on the version of your operating system.



3. In the Software Overview, the **DisplayLinkDriver** is listed under Extensions item.

A screenshot of the Software Overview window. The 'Extensions' section is selected in the left sidebar. The main pane shows a table of installed extensions. The 'DisplayLinkDriver' extension is highlighted in blue. Below the table, the details for the 'DisplayLinkDriver' are shown.

Extension Name	Version	Last Modified	Loaded	Obtained from
CoreStorage	3.7.50.1	11/12/15 04:40	Yes	Apple
CoreStorageFsk	517.50.1	11/12/15 04:40	Yes	Apple
CSRBluetoothHostControllerUSBTransport	4.4.6	11/12/15 05:01	No	Apple
CSRBluetoothHostControllerUSBTransport	4.4.6	11/12/15 05:01	No	Apple
CSRHIDTransitionDriver	4.4.6	11/12/15 05:01	No	Apple
DisplayLinkDriver	3.0.0 (79478)	09/02/17 10:00	Yes	Identified Devel
Dont Steal Mac OS X	7.0.0	11/12/15 04:41	Yes	Apple
DspFuncLib	274.12	11/12/15 05:00	Yes	Apple
exfat	1.4	11/12/15 04:23	No	Apple
FireWireStorageDeviceSpecifics	3.7.1	11/12/15 05:29	No	Apple

DisplayLinkDriver:

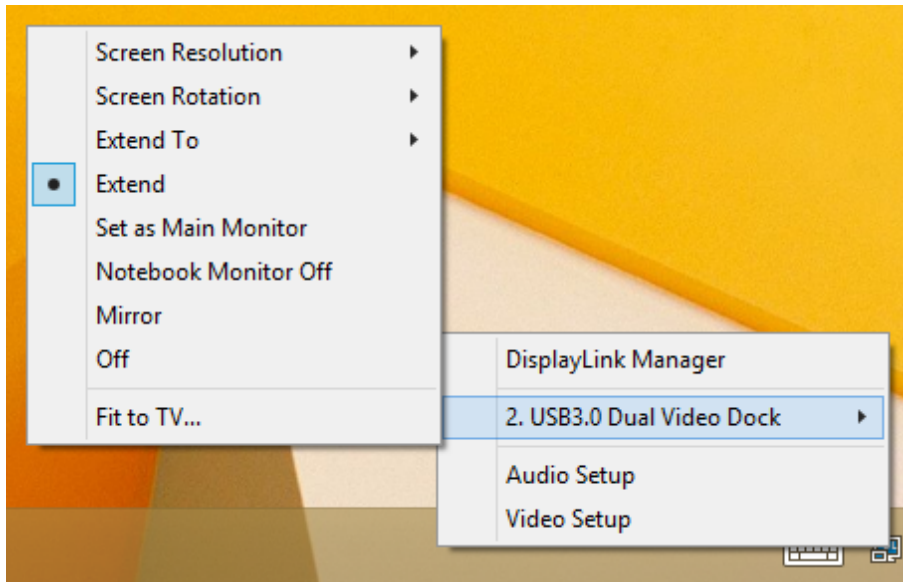
Version: 3.0.0 (79478)
Last Modified: 09/02/17 10:00
Bundle ID: com.displaylink.driver.DisplayLinkDriver
Loaded: Yes
Get Info String: DisplayLink Driver 3.0.0 (79478) - Copyright © 2003 - 2017 DisplayLink (UK) Ltd. All rights reserved.
Obtained from: Identified Developer
Kind: Intel
Architectures: x86_64
64-Bit (Intel): Yes
Location: /Library/Extensions/DisplayLinkDriver.kext

6. Display Configuration on Windows

When the Docking Station is connected, an icon appears in the taskbar.

This is the icon of the **DisplayLink Manager** utility that allows configuring the display mode, screen rotation, screen resolution, and physical arrangement of your monitors.

1. Click on the utility icon  in the **Windows System Tray** to open the utility settings menu.



2. The utility menu provides easy access to several options as described below.

Screen Resolution	Click to select an available resolution. NOTE: This function is invalid in mirror mode, as the resolution is defined by the resolution of the primary monitor.
Screen Rotation	Rotate the screen according to the desired orientation.
Extend To	Extend the screen to the desired orientation.
Extend	This is the default setting. Extend the computer's desktop to the external display.
Set as Main Monitor	Set this screen to the main screen.
Notebook Monitor Off	Set the add-on monitor as the main display and turn off the screen of the laptop. NOTE: This function works only when one add-on monitor is connected. This option will also only appear on laptop.
Mirror	Duplicates the primary monitor to the add-on display connected to the Docking Station.
Off	Turn off the monitor.

Fit to TV	Adjust the size of the desktop on a TV display. NOTE: This function works only when one add-on monitor is connected. Besides, this option will also only work in extended mode. The add-on monitor will change to the extended mode if selecting this option while in mirror mode.
Audio Setup	Opens the Windows Sound panel to configure audio settings.
Video Setup	Opens the Windows Screen Resolution panel to configure display settings.

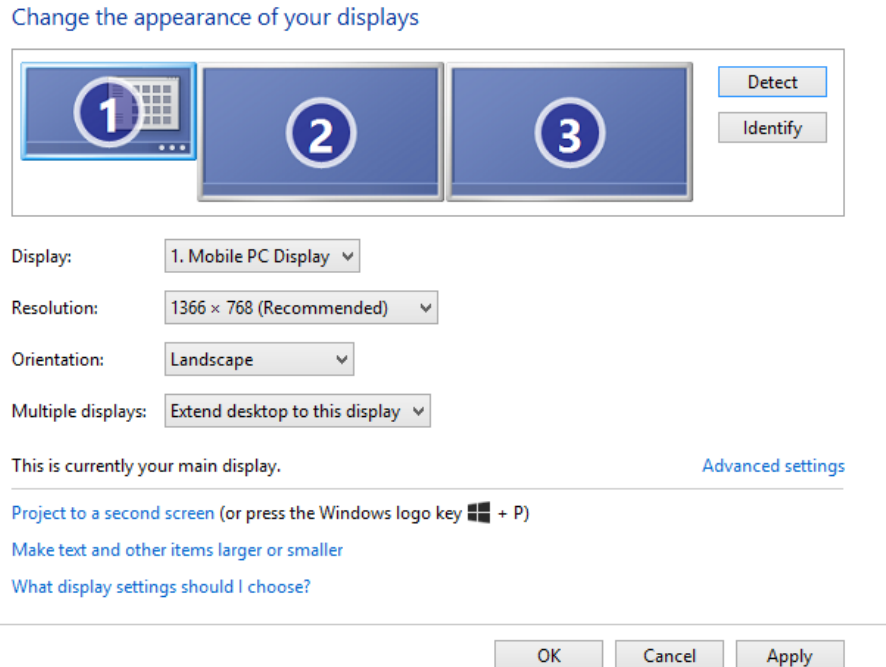
6.1 Multi-monitor Configuration

The Docking Station can support up to two external monitors (HDMI and DVI) in addition to the notebook's display.

Once an external monitor is connected, it can be configured to use either **Extend mode**, **Mirror mode** or be the **Primary** display.

To open the Windows display setting, right-click with the mouse anywhere on the **Windows Desktop**, and select **Screen Resolution** from the menu.

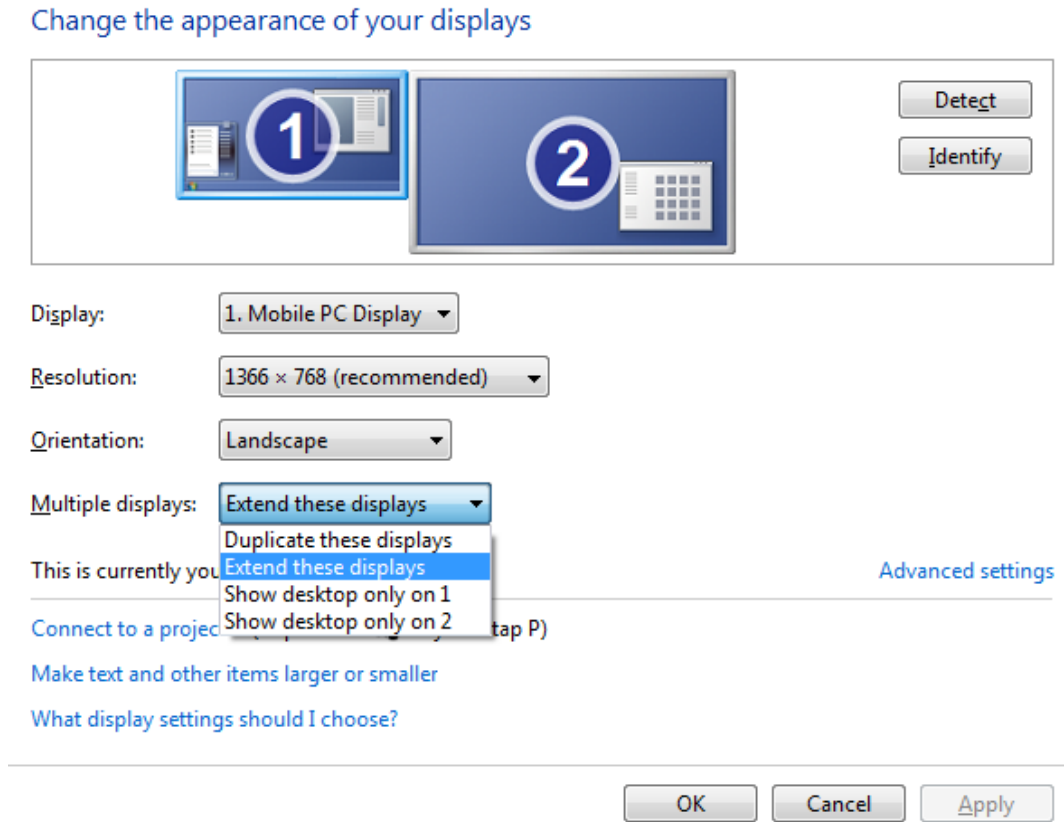
Alternatively, you can click on the utility icon in the **Windows System Tray** and then select **Video Setup**.



The arrangement of the displays can be changed by dragging the screens to the correct position, to reflect the physical positions of the displays on your desk.

Extended mode

1. Open the **Screen Resolution** configuration window.
2. In the **Display** drop-down menu, select the preferred monitor.
3. In the **Multiple displays** menu, select **Extend these displays**.
4. Click **OK** to confirm and exit.



5. Once the setting is completed, simply drag and drop the application icons or the opened windows to the add-on monitor. However, please note that some applications may not support to be displayed on the extended desktop.

Cursor disappeared

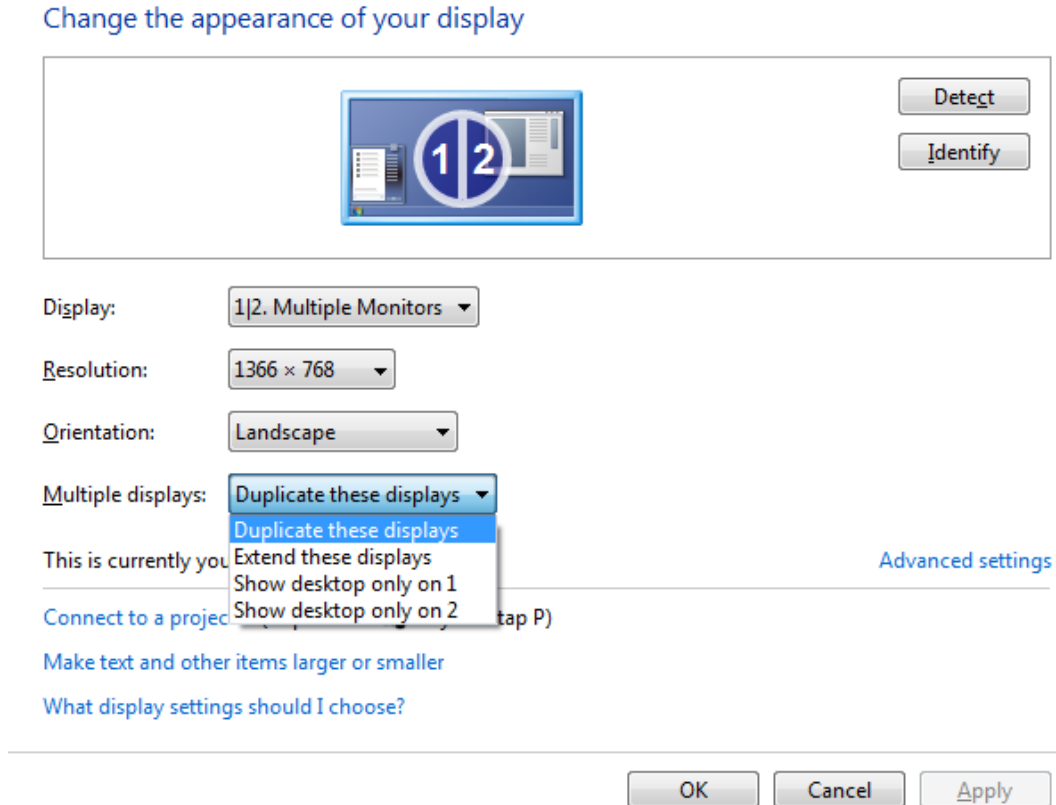
In extended mode operation, if the add-on display is disconnected, the desktop will still be extended to the add-on monitor. In this case, the cursor may not be visible on the main display. If it happens, reconnect the add-on monitor to the adapter and move the mouse cursor on the primary monitor.

Video playback in extended mode

If the quality of video or DVD playback is poor or slow in extended mode, please playback the video or DVD on the primary monitor instead of the external monitor.

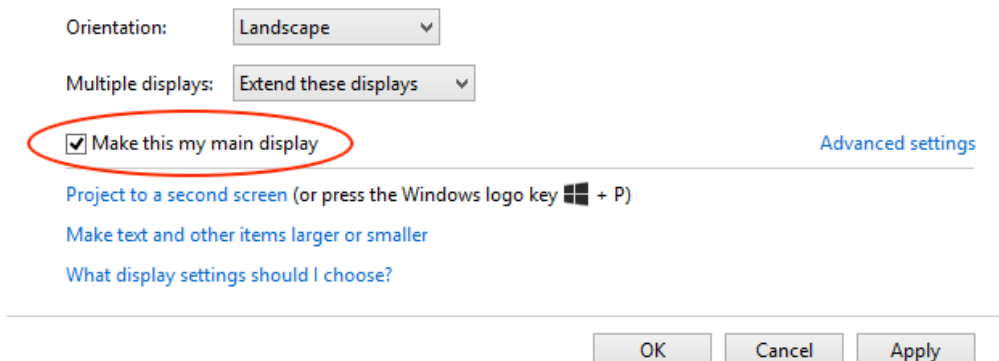
Mirror mode

1. Open the **Screen Resolution** configuration window.
2. In the **Display** drop-down menu, select the preferred monitor.
3. In the **Multiple displays** menu, select **Duplicate these displays**.
4. Click **OK** to confirm and exit.



Set the primary monitor

1. Open the **Screen Resolution** configuration window.
2. In the **Display** drop-down menu, select the preferred monitor.
3. Check the box **Make this my main display**.



4. Click **OK** to confirm and exit.

7. Display Configuration on Mac OS

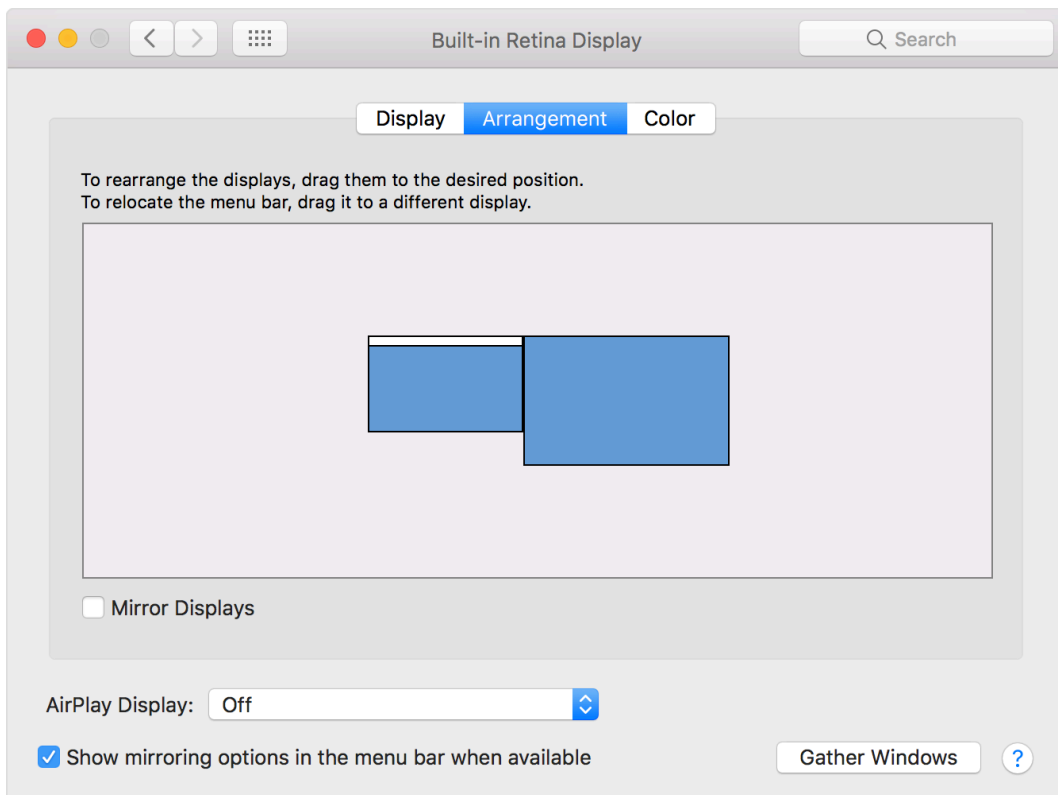
To configure the settings of a display attached to the computer through the Docking Station, proceed as described in below steps.

Extended mode

1. Click on the Apple menu and choose **System Preferences**.
2. In the System Preferences panel, click on **Displays** icon.



3. Click on the **Arrangement** tab to view and configure the displays connected to your Mac.



4. To use the external monitor in extended mode simply make sure that the **Mirror Displays** checkbox isn't selected.

The blue boxes in the Arrangement panel represent all displays connected to your computer.

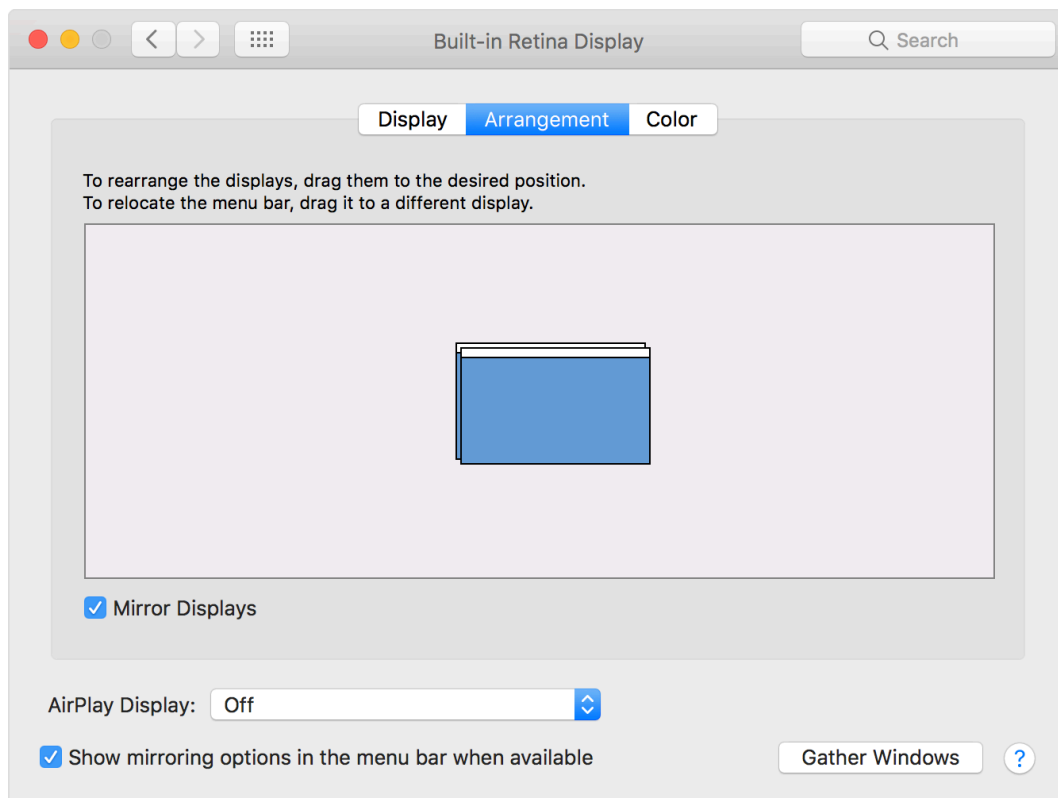
To change the location of a display, click and drag its blue box to where you want it.

For example, you might have an external display to the left of your laptop on your desktop. If its blue box is at the right side, you can drag it to the left to match the real location.

The white bar at the top of the blue box identifies your primary display. The primary display is where your desktop icons and open app windows first appear. To make a different display your primary display, drag the white bar to the box that represents that display.

Mirror mode

1. Click on the Apple menu and choose **System Preferences**.
2. In the System Preferences panel, click on **Displays** icon then click **Arrangement** tab.
3. In the lower-left corner of the Arrangement panel, select **Mirror Displays** checkbox.



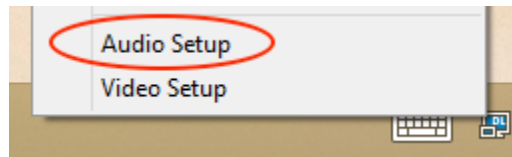
In video mirroring mode, both displays show the same information. The built-in display of the notebook is simply duplicated on the external monitor.

8. Audio Configuration

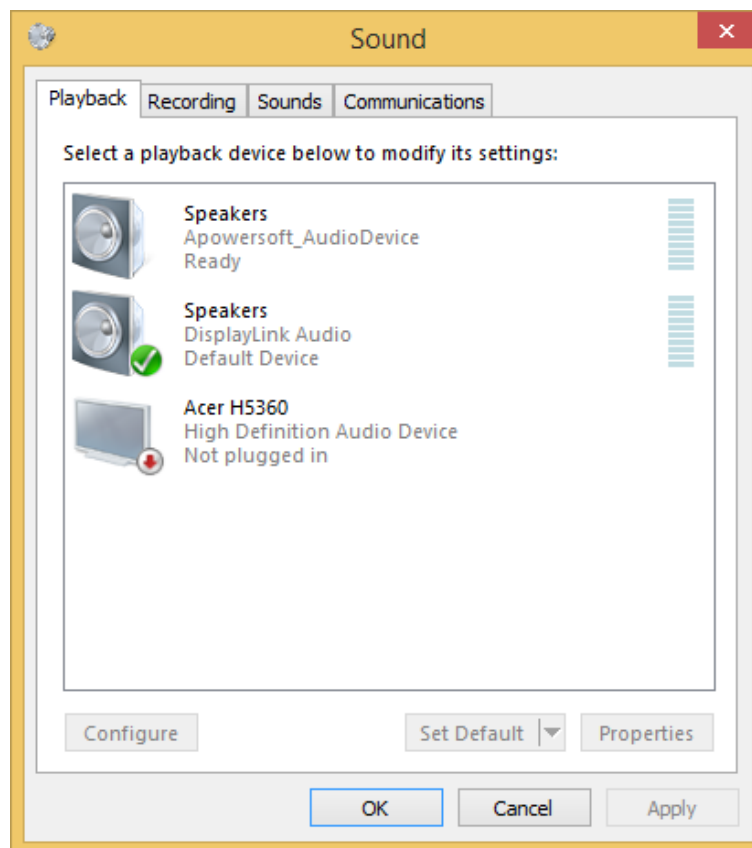
The following instructions describe how to configure the audio settings in order to setup the Docking Station as the default audio output.

8.1 Windows

1. The audio settings can be opened from the utility icon menu by choosing the **Audio Setup** option.



2. Click on the **DisplayLink Audio** device in the **Sound** panel.



3. Click **Set Default** button to make this device the default audio output.
4. Click **OK** to apply the changes and close the window.

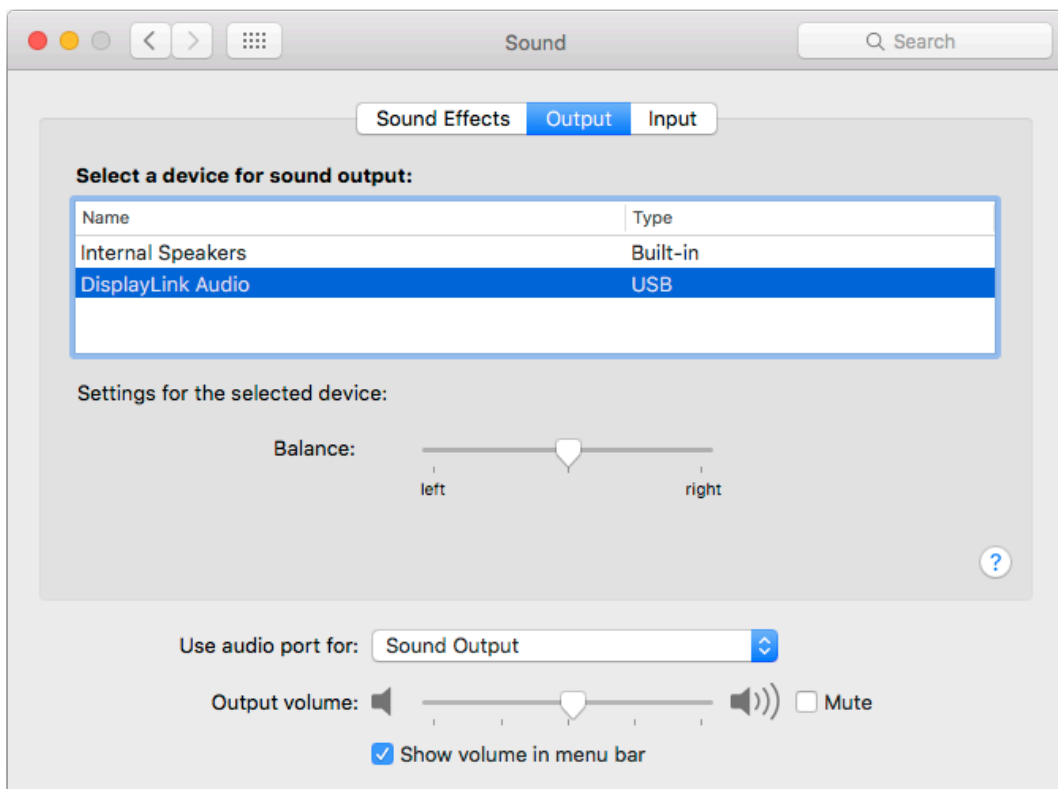
It may be necessary to restart applications to force them to use the new default audio output.

8.2 Mac OS

1. Click on the Apple menu in the upper-left of the screen and choose **System Preferences**.
2. In the System Preferences panel, click on **Sound** icon.



3. Click on the **Output** tab and select **DisplayLink Audio (USB)** device for sound output.

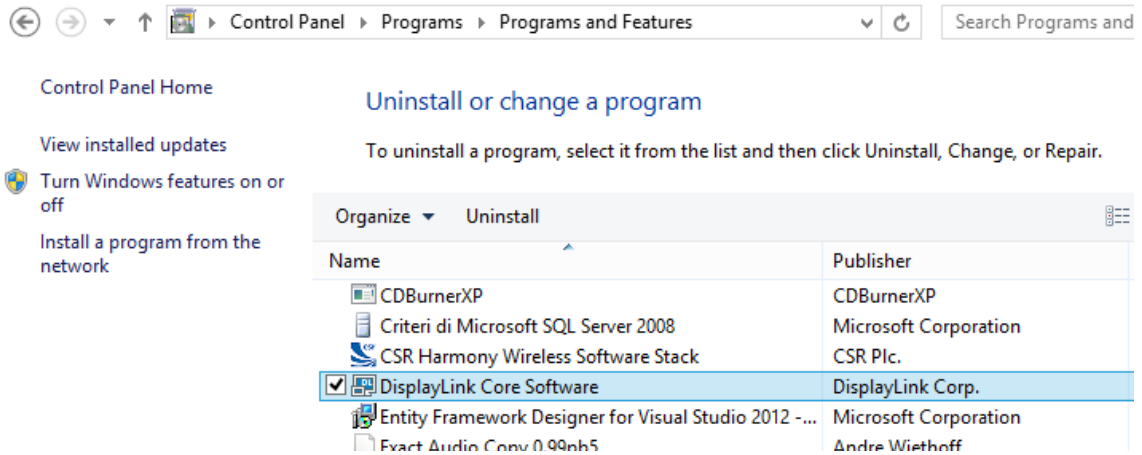


9. Uninstall the Driver

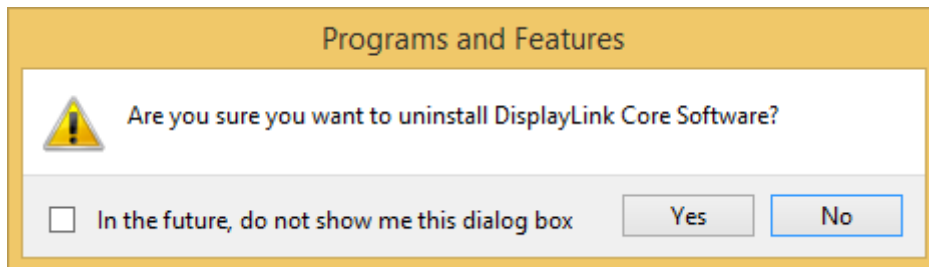
Follow the instruction below to uninstall the driver from your computer.

9.1 Windows

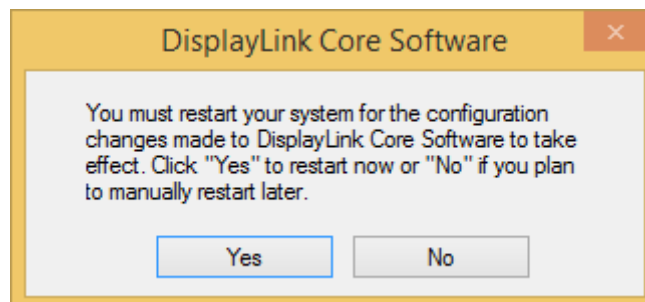
1. Open the **Control Panel** and click on **Uninstall a program** under the **Programs** category.
2. Select the **DisplayLink** driver from the list and click **Uninstall** to remove the software.



3. Click **Yes** to confirm the uninstallation.

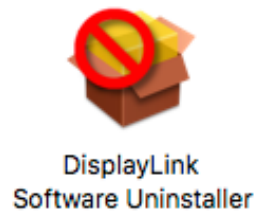


4. Click **Yes** to restart your computer.



9.2 Mac OS

1. Open **Applications > DisplayLink** folder and double-click on **DisplayLink Software Uninstaller** program icon.



2. Click **Uninstall** to proceed with the uninstallation.



10. Specifications

Host Interface	USB 3.0	
Connectors	Video output	HDMI Connector DVI Female Connector
	Host upstream link	USB B Type Female Connector
	HUB downstream link	USB A Type Female Connector
	Audio Port	3.5 mm stereo mini-jack 2.1ch
	Ethernet Port	RJ-45 Connector
	Power	DC power jack
Video Resolution	HDMI	2048 x 1152
	DVI	2048 x 1152
Supported Colors	16 and 32 Bit	
Audio	2.1 Channels	
Ethernet	10/100/1000 Mbps	
Power	Power Adapter	Input: AC 100-240V Output: DC 5V/4A
	Power Consumption	Operating Power: 14.43W Suspend Mode Power: 1.95W
Physical Properties	Housing Material	ABS (Plastic)
	Weight	365 g approx.
Working Environment	Operation Temperature	0 ~ 40 °C
	Storage Temperature	-20 ~ 70 °C

Specifications and appearance are subject to change without notice.

10.1 Supported Resolutions

Before adjusting the display resolution, refer to the table below for the supported resolutions.

Resolution (Pixels)	Refresh rate 16 bit (Hz)	Refresh Rate 32 bit (Hz)
640x480	60 72 75 85	60 72 75 85
800x600	56 60 72 75	56 60 72 75 85
1024x768	60 70 75 85	60 70 75 85
1280x720	60	60
1280x768	60 70 75 85	60 70 75 85
1280x800	60	60
1280x1024	60 75 85	60 75
1366x768	60	60
1400x1050	60 75 85	60 75 85
1600x1200	60	60
1680x1050	60	60
1920x1080	60	60
1920x1200	60	60
2048x1152	60	60

Note that interlaced modes and reduced blanking modes are not supported.