

# Hamlet

## USB 3.0 DOCKING STATION

Dual Display DVI+HDMI - 6 Port USB Hub - LAN - Audio



### Quick Installation Guide HDOCKS300

[www.hamletcom.com](http://www.hamletcom.com)

Dear Customer,

Thanks for choosing a Hamlet product. Please carefully follow the instructions for its use and maintenance and, once this item has run its life span, we kindly ask You to dispose of it in an environmentally friendly way, by putting it in the separate bins for electrical/electronic waste, or to bring it back to your retailer who will collect it for free.



We inform You this product is manufactured with materials and components in compliance with RoHS Directives 2011/65/EU & 2015/863/EU, with WEEE Directives 2002/96/CE, 2003/108/CE Italian Legislative Decree 2005/151, EMC Directive 2014/30/EU and LVD Directive 2014/35/EU for the following standards:  
EN 55032: 2015, CISPR 32: 2012, EN 61000-3-2: 2019,  
EN 61000-3-3: 2013, EN 55035: 2017, CISPR 35: 2016,  
IEC 62368-1: 2014 (Second Edition).



The complete CE declaration of conformity of the product can be obtained by contacting Hamlet at [info@hamletcom.com](mailto:info@hamletcom.com). Visit [www.hamletcom.com](http://www.hamletcom.com) for complete information on all Hamlet products and to access downloads and technical support.  
Imported by: CARECA ITALIA SPA - Scandiano (RE) . Italy.

### **Trademarks and changes**

All trademarks and company names mentioned in this manual are used for description purpose only and remain property of their respective owners.

The material in this document is for information only. Contents, specifications and appearance of the product are indicative and may change without notice.

## 1. Introduction

Hamlet USB 3.0 Dual Display Docking Station lets you expand the working area of the screen and the notebook's connectivity using a single USB 3.0 cable connection.

The Docking Station is equipped with HDMI and DVI video outputs, two USB 3.0 ports, four USB 2.0 ports, a Gigabit Ethernet port and two audio jacks for speakers/headphones and microphone. A DVI to VGA display adapter is also included.

### Specifications

- USB 3.0 Type B port for computer connection
- Compliant with USB 3.0 standard up to 5 Gbps
- Backward compatible with USB 2.0
- 2-Port USB 3.0 hub (5 Gbps), 1 with Battery Charging 1.2 support
- 4-Port USB 2.0 hub (480 Mbps)
- Video output: HDMI connector, DVI female connector
- DVI (male) to VGA (female) video adapter
- Max video resolution: 2048 x 1152
- Ethernet port: RJ-45 10/100/1000 Mbps
- Power adapter: 100-240V AC input, 5V DC 4A output
- Dimensions (without cables): 176.5 x 81.6 x 31.1 mm
- Compatible with Windows 7, 8 and 10; Mac OS 10.6 or above

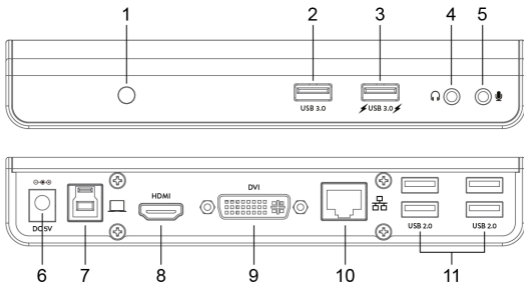
### Package contents

- USB 3.0 Docking Station
- USB 3.0 cable
- Stand for upright use
- DVI-VGA video adapter
- External power adapter
- Utility CD (Driver and Manual)
- Quick installation guide

## System requirements

- Processor: 2.0 GHz dual core or higher
- RAM: 4GB or greater
- Available USB 2.0 or USB 3.0 (recommended) port
- 30 MB of available disk space
- Operating Systems:  
Windows 7 (SP1 or later), Windows 8, Windows 10  
Mac OS 10.6 or later

## 2. Product Overview



1. Power LED indicator
2. USB 3.0 port
3. USB 3.0 port with Battery Charging 1.2 support
4. Audio output jack for headphone or speaker
5. Microphone jack input
6. Power jack for power adapter connection
7. USB 3.0 Type B port for connection to computer
8. HDMI port
9. DVI port
10. Gigabit Ethernet port (RJ-45)
11. USB 2.0 ports (x4)

### 3. Driver Installation

**CAUTION!** DO NOT connect the docking station to a computer before installing the provided driver.

#### Windows OS

1. Insert the provided CD into your computer's optical drive and the AutoPlay will be launched automatically.  
*If the **AutoPlay** does not appear, locate and double-click on the **Setup.exe** file in the driver folder.*
2. Click **Run Setup.exe** to execute the installer program.
3. If **User Account Control** dialog box is prompted, enter the administrator password and then click **Yes** to start the installation.
4. Follow the onscreen instructions and click **Finish** to complete installation.
5. If required, click **Reboot** to restart the computer.

#### Mac OS

1. Insert the provided CD into your computer's, open the **Mac** folder and double-click the **dmg** file.
2. Launch the **Installer.pkg** file and click **Continue** to start the driver installation.
3. When the installation is complete, click **Restart** to finish installing the software.

### 4. Docking Station Connection

1. Connect the Docking Station to the computer using the USB 3.0 cable included.
2. Plug the power adapter into the power jack of the docking.
3. Connect the Docking Station to a HDMI or/and DVI monitor. The screen may temporarily go black or flicker during this process.
4. Connect the USB peripherals, the Ethernet cable, speaker and microphone to the corresponding connectors.

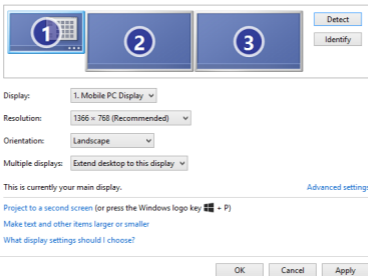
## 5. Multi-monitor Configuration


The Docking Station can support up to two external monitors (HDMI and DVI) in addition to the notebook's display.

Once an external monitor is connected, it can be configured to use either “**Mirror mode**”, “**Extend mode**” or be the “**Primary**” display.

To open the Windows display setting, right-click with the mouse anywhere on the **Windows Desktop**, and select **Screen Resolution** from the menu.

Change the appearance of your displays



Alternatively, you can click on the utility icon  in the **Windows System Tray** and then select **Video Setup**.

### IMPORTANT

Download the latest drivers available at the following addresses.

[www.hamletcom.com/products/hdocks300.aspx?t=download](http://www.hamletcom.com/products/hdocks300.aspx?t=download)

[www.displaylink.com/downloads](http://www.displaylink.com/downloads)

For more information, please refer to the complete **User Manual** inside the CD supplied with the product.